



PC USERS – READ ME Version 2

If you have copied the AIM GESTURE DATABASE folder to the root level of your C drive, the shortcut “properties” path should be:

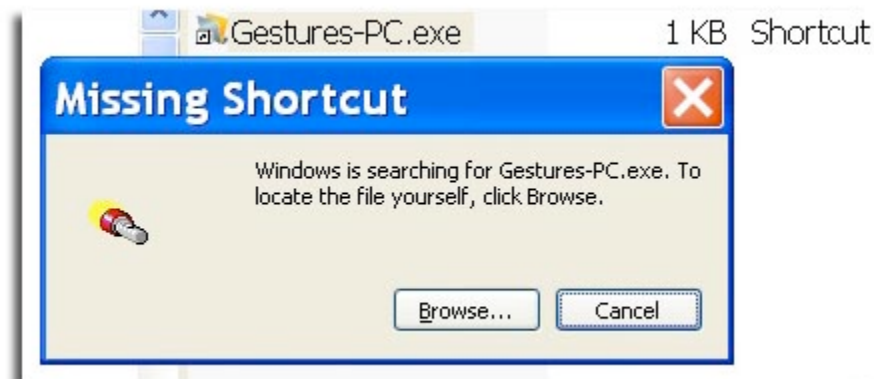
"C:\AIM GESTURE DATABASE 2\DATABASE_FILES\"

On some Windows computers, depending on the hardware and/or operating system, you may find the shortcut file “Gestures-PC.exe” does not work properly or has to be directed to its real file, which is inside the DATABASE_FILES.

Note: Version 2’s main folder is named, “AIM GESTURES DATABASE 2”

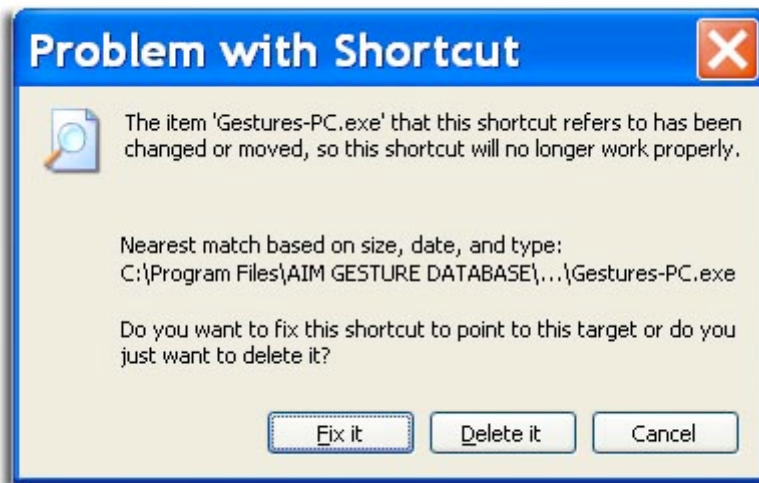


Some users may not copy the DATABASE_FILES to the root level of their C drive, as prescribed in the INSTALLATION GUIDE. When they double-click (launch) the shortcut for the “Gestures-PC.exe” file, they are presented with this alert box:



Click the “Browse” button and navigate to the DATABASE_FILES folder where you will find the main file “Gesutures-PC.exe” (near the bottom, if viewed as a list) to re-link the shortcut file.

Additionally, some users may find that their Windows computer presents them with this alert box:



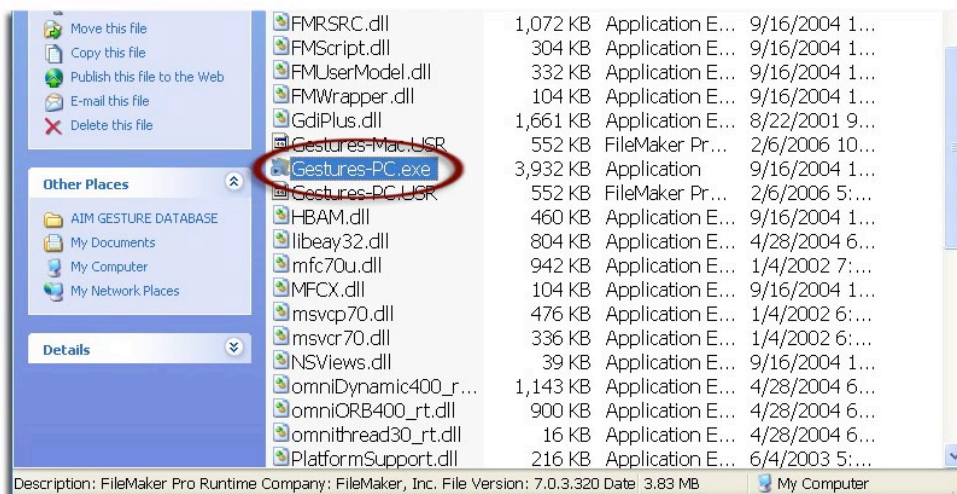
Click the “Fix it” button. Some Windows computers, depending on the version of operating system, will automatically re-link the main file and open the database. If not, follow the instructions above for “Browse” – navigating to the main file, “Gesutures-PC.exe” in the DATABASE_FILES folder.

Once the shortcut file is linked properly, you can move that file to anywhere on your Windows computer and it will retain the link to the main file that must remain inside the DATABASE_FILES folder to run the database.

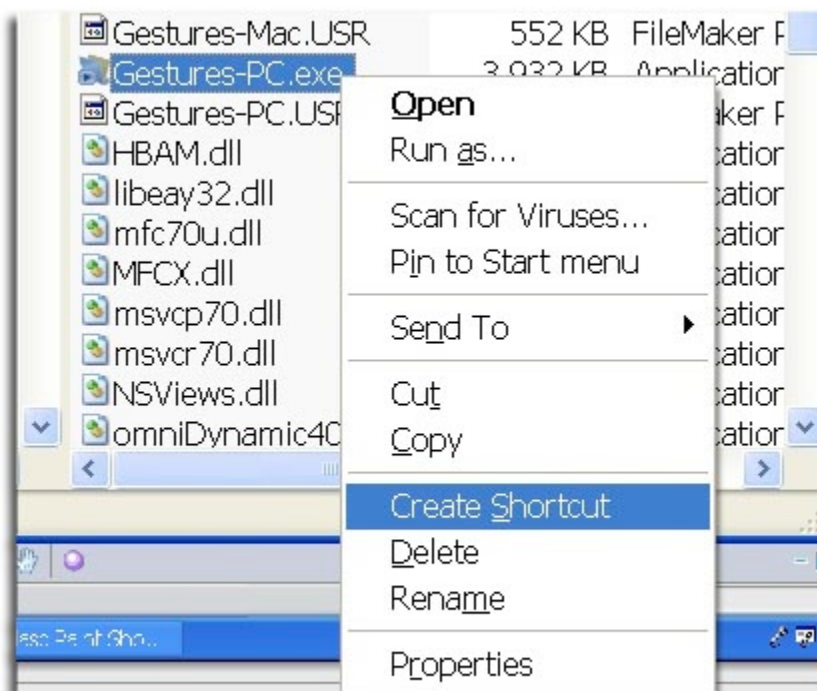
If no success can be found, simply follow the instructions below to create a new shortcut file:

WORKAROUND (Creating a new shortcut file): The following is only for after the files have been copied to your hard drive (not from the DVD-ROM disc itself).

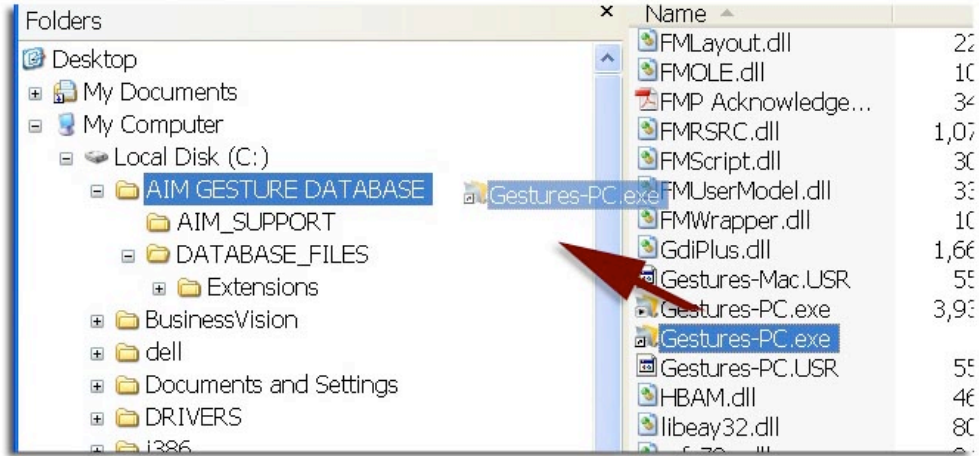
1. Open the DATABASE_FILES folder (on your hard drive, not the DVD-ROM disc) and locate the main file “Gesutures-PC.exe” –
DO NOT MOVE THIS FILE.



2. Select the file (one click – do not launch it by double-clicking it).
3. Right click your mouse on the “Gestures-PC.exe” icon.



4. From the pop-up menu, choose CREATE SHORTCUT.
5. Now, move that new “Shortcut to Gestures-PC.exe” file to anywhere you would like, such as in the AIM GESTURE DATABASE folder or on your PC desktop.



The shortcut file is the one with the tiny curved arrow in the bottom left-hand corner of its icon.



6. Double click the new (and correctly linked) shortcut file to launch the database.

Why is this necessary only on a Windows, PC computer and not the Mac version?

A. The database has been created with Filemaker Developer which requires that all files reside, open to each other, in one large folder. The shortcut is created for your convenience so that you don't have to look deep into the folder of video and database files to launch the actual database.

B. Microsoft Windows does not create a "relative" shortcut, but an "absolute" one, which could be different for each user's preference of where they would like to copy the software files.

C. Expensive and sophisticated solutions (which would raise the end user's cost) would not necessarily be successful for all users in every situation, especially those who are in an educational institution where any programs must be installed by a technician who has authority to change security, user and/or registry settings.

For any more assistance...click below to go to the
AIM Gesture Database instructions, manuals and support:
<http://www.aimlanguagelearning.com/support.htm>

If you are unable to click the above link (requires Adobe Acrobat Reader version 7 or higher),
copy and paste it into your Internet browser location line.
You may wish to bookmark that page for future reference.

